



Wooden houses



impex@omna.lt



www.omna.lt

Houses made of glued beams are very popular.

The main advantages of glued beams:

- does not change its shape during operation;
- has the big in comparison with usual wood durability;
- has a high quality of front surfaces and does not require additional finishing;
- less prone to cracking during its operation, the grooves and ridges along the length of the wall beam rigidly fix the beam in the wall and do not let moisture through.





Glued laminated timber houses:

serial power production - sets of houses from glued beams (the area of the house is up to 100 m², the volume of wall beams is up to 90 m³) per month. When gluing lamellas from coniferous trees (pine, spruce), our company uses special certified waterproof environmentally friendly pure glue AKZONOBEL (Sweden), which was approved by the institutes of Norway, France, Germany and Holland for the production of load-bearing wooden structures.

Glued laminated timber:

selected coniferous wood logs, which are sawn, are processed in drying chambers under mild conditions to a relative humidity of 9 to 12%. Dried raw materials are planed from 4 sides to obtain accurate dimensions, sorted and glued on a powerful hydraulic press into glued beams of different sections. Serial production capacity per year is 3,000 m³ of laminated laminated veneer lumber.



Typical house designs



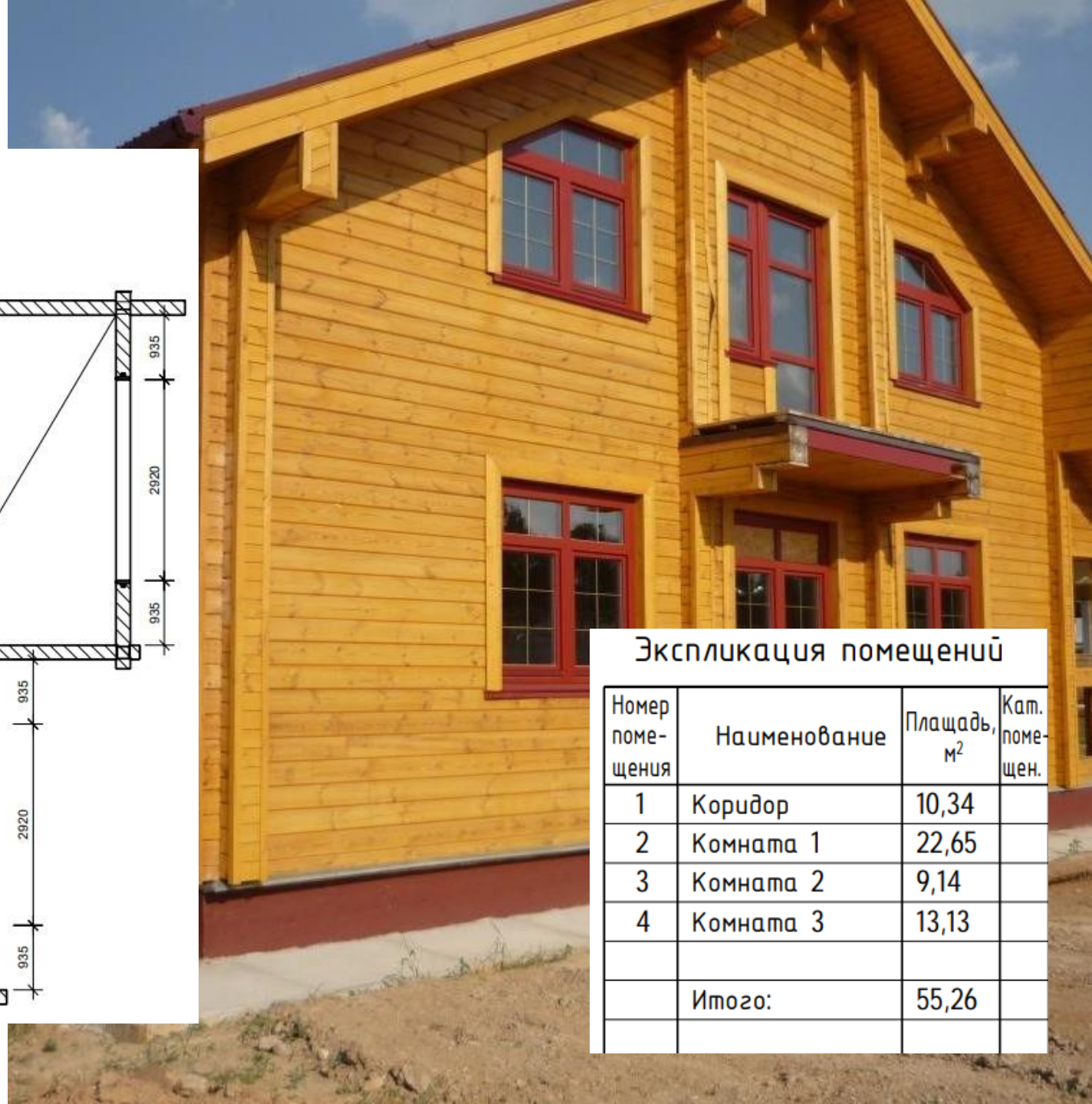
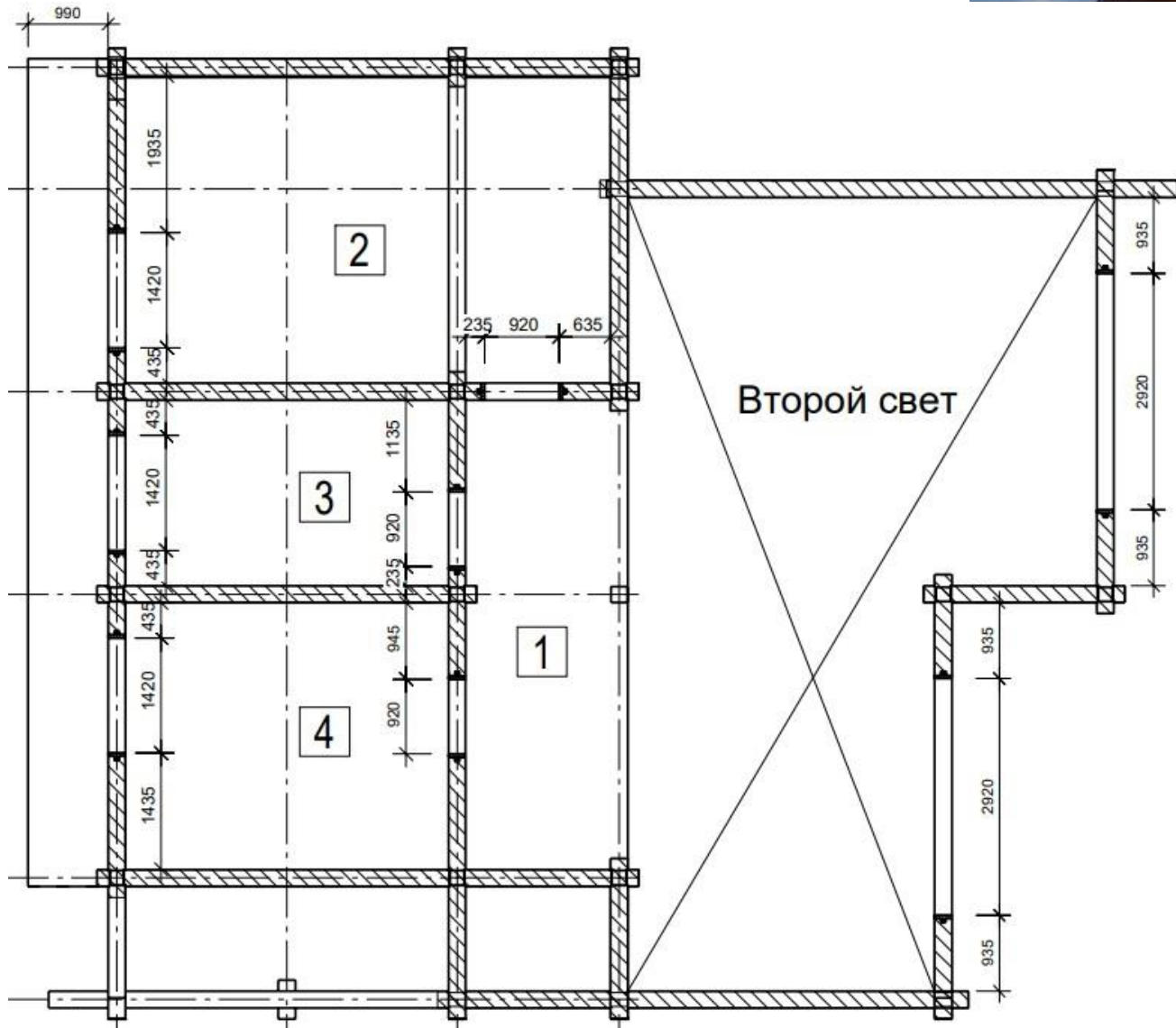
The kit includes: wall beam (140hx210), beams floors, set hardware, additional elements (elements rafter systems (rafters, crate, insulation, screeds, overlays), floor device (floor board, logs), terrace device (terrace board).

House made of glued beams #1

Total area - 160.00 m²
Residential - 78.38 m²

Price: **176.000** EURO
without VAT

Second floor plan



Экспликация помещений

Номер помещения	Наименование	Площадь, м ²	Кат. помещен.
1	Коридор	10,34	
2	Комната 1	22,65	
3	Комната 2	9,14	
4	Комната 3	13,13	
	Итого:	55,26	

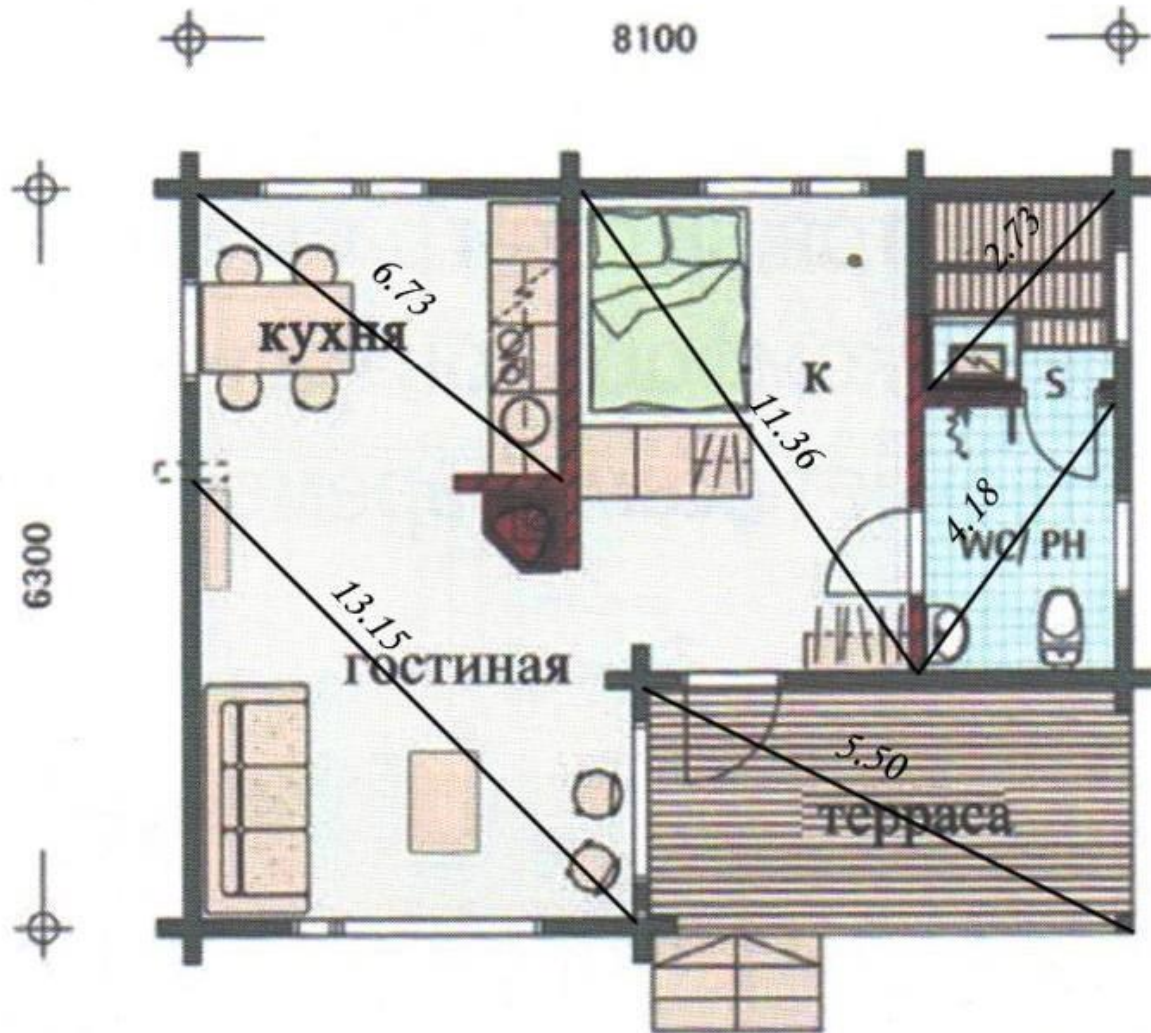


House from glued laminated timber #2

Total area - 38.15 m²

Living area - 11.36 m², terrace - 5.5 m²

The cost of a house kit **78.000** EURO
(excluding VAT)



The kit includes:wall beam (150hx210), floor beams, a set of hardware, additional elements (rafter elements systems (rafters, sheathing, overlay, runs, mezhstrop.doska, insulation), floor installation (floor board, logs, insulation), terrace installation (terrace board), ceiling with insulation.



The kit includes: wall beam (150hx220), beams floors, set hardware, additional elements (elements rafter systems (rafters, crate, insulation, screeds, overlays),

floor device (floor board, logs), terrace device (terrace board).

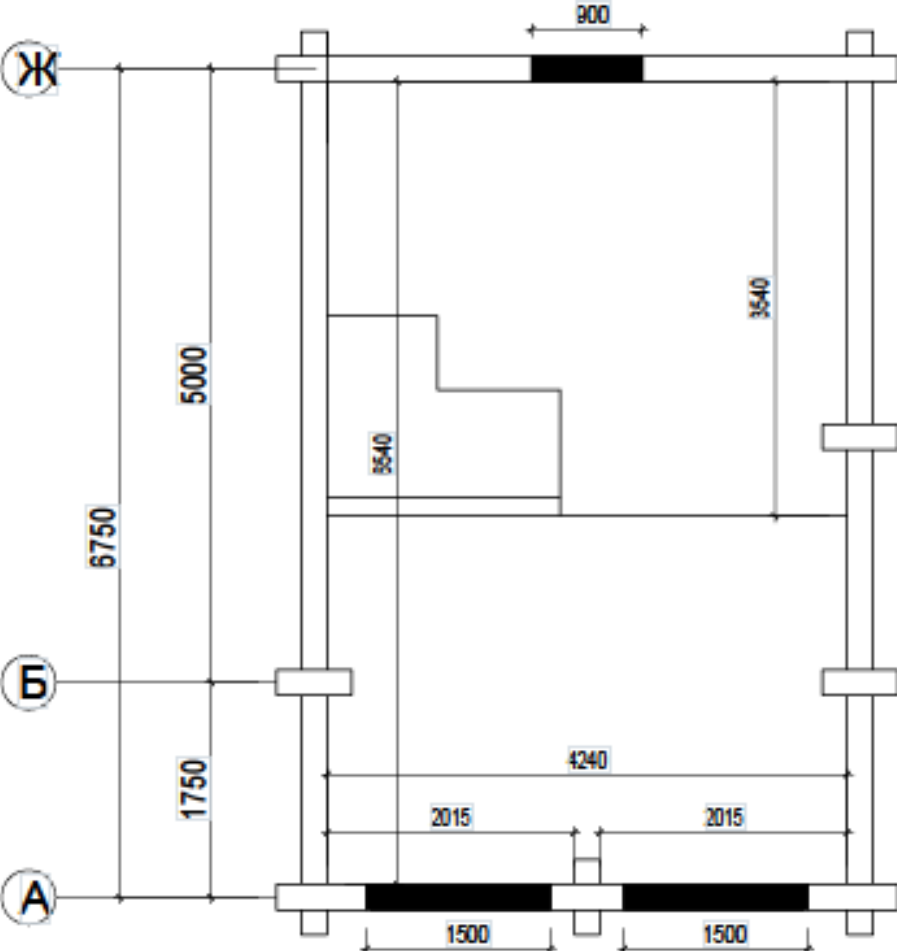
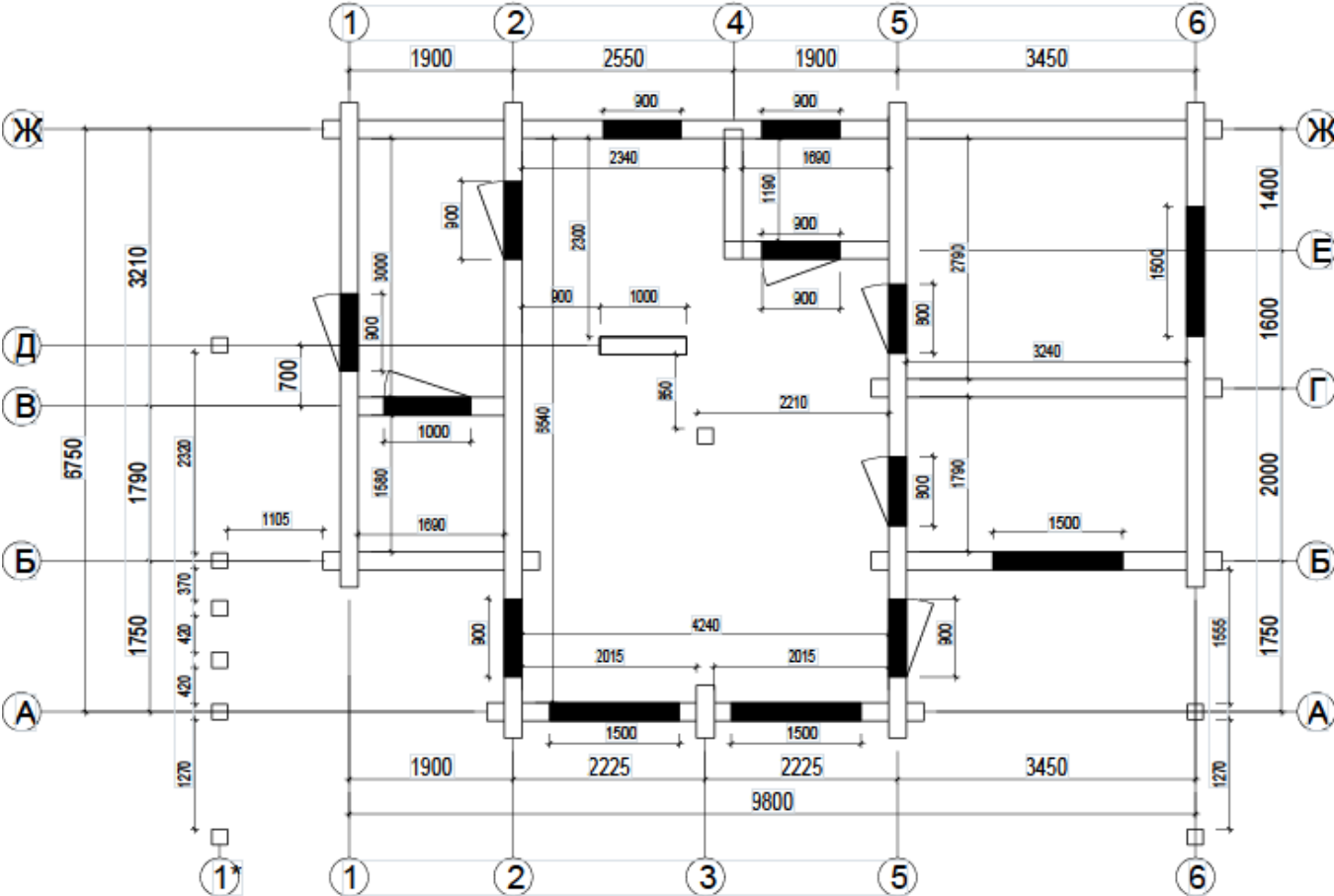
House from glued laminated timber #3

Total area - 64.25 m²

Living area - 29.84 m², terrace - 45.16 m²

The cost of a house kit 83.200 EURO (excluding VAT)

Floor plan



Attic floor plan

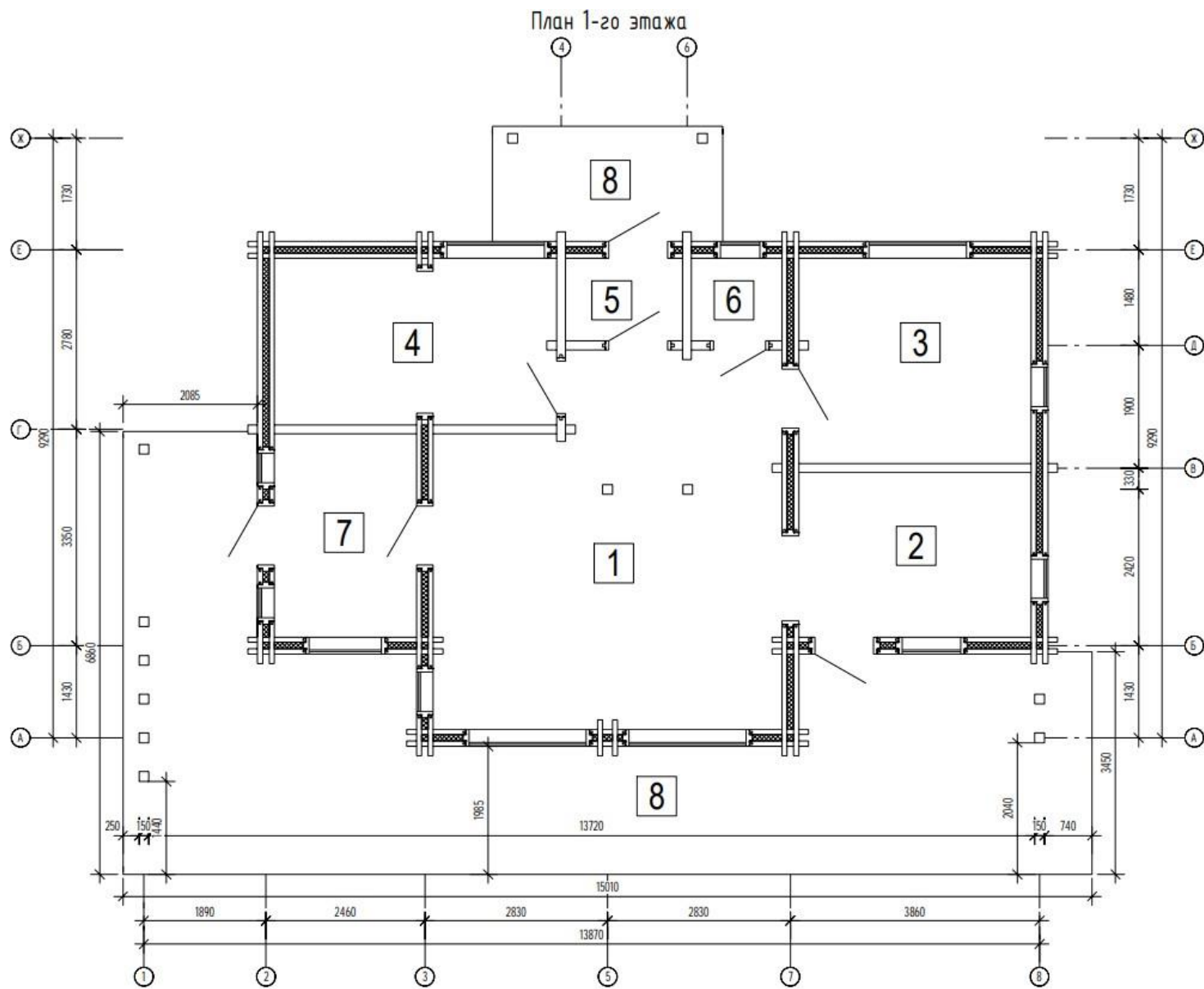


The kit includes:wall beam (150hx210), beams floors, set hardware, additional elements (elements rafter systems (rafters, sheathing, overlay, runs, interstring board, insulation),

floor device (floor board, logs, insulation), terrace device (terrace board), floor with insulation

House from glued laminated timber #4
Total area -91.53 m²
Living area - 41.40 m², terrace - 59.30 m²

Price:119.600 EURO without VAT



Экспликация помещений

Номер помещения	Наименование	Площадь, м ²	Кат. помещ.
1	Гостиная	29,1	
2	Кухня	9,18	
3	Комната 1	11,45	
4	Комната 2	5,68	
5	Ванная	2,32	
6	Сан.узел	1,79	
7	Комната 3	6,93	
8	Терраса	57,04	
	Итого:	123,49	



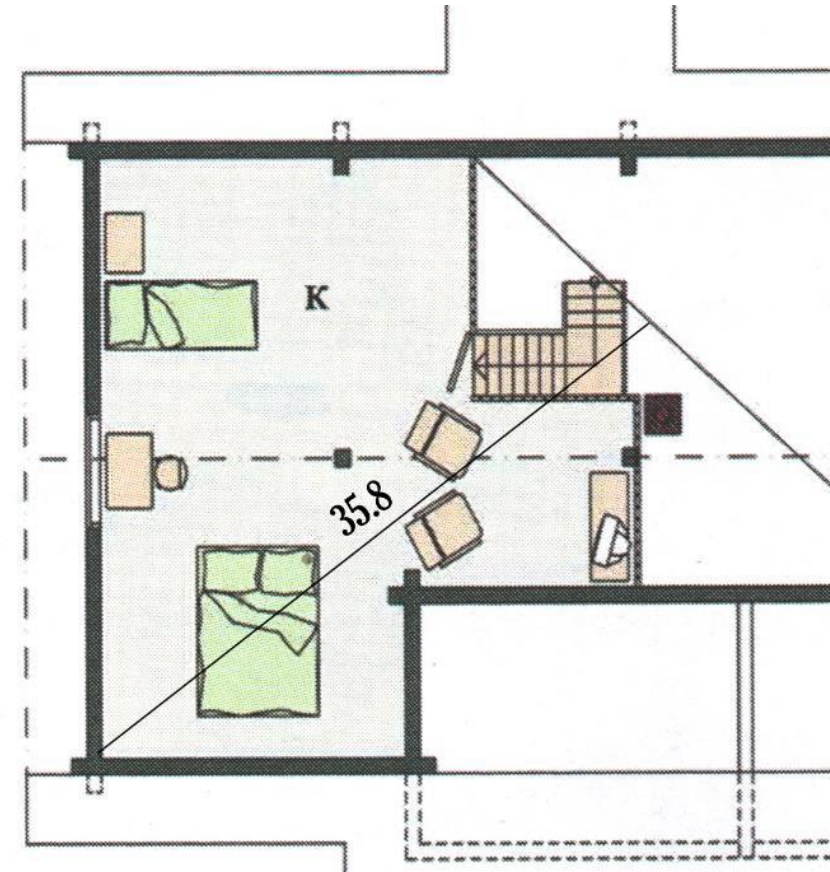
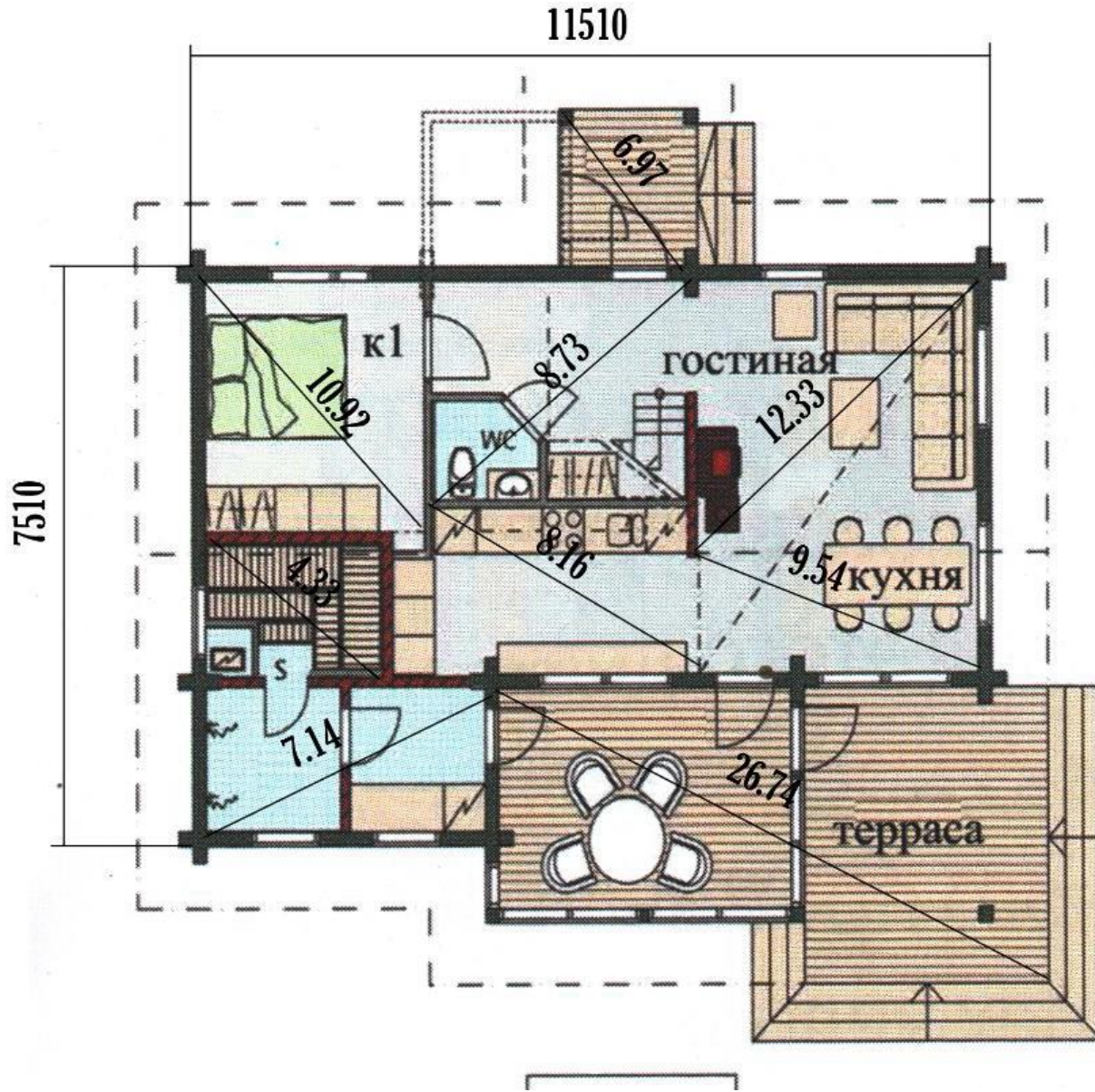
The kit includes:wall beam double (150hx80.50m3), floors, beams set hardware, additional elements (elements rafter systems (rafters, crate, insulation, screeds, overlays), floor device (floor board, logs), terrace device (terrace board)).

House made of glued laminated timber #5

The total area is 130.36 m2.
Residential - 46 m2
Terrace - 33.71 m2

Price: **143.000** EURO
without VAT

Floor plan



Second floor plan



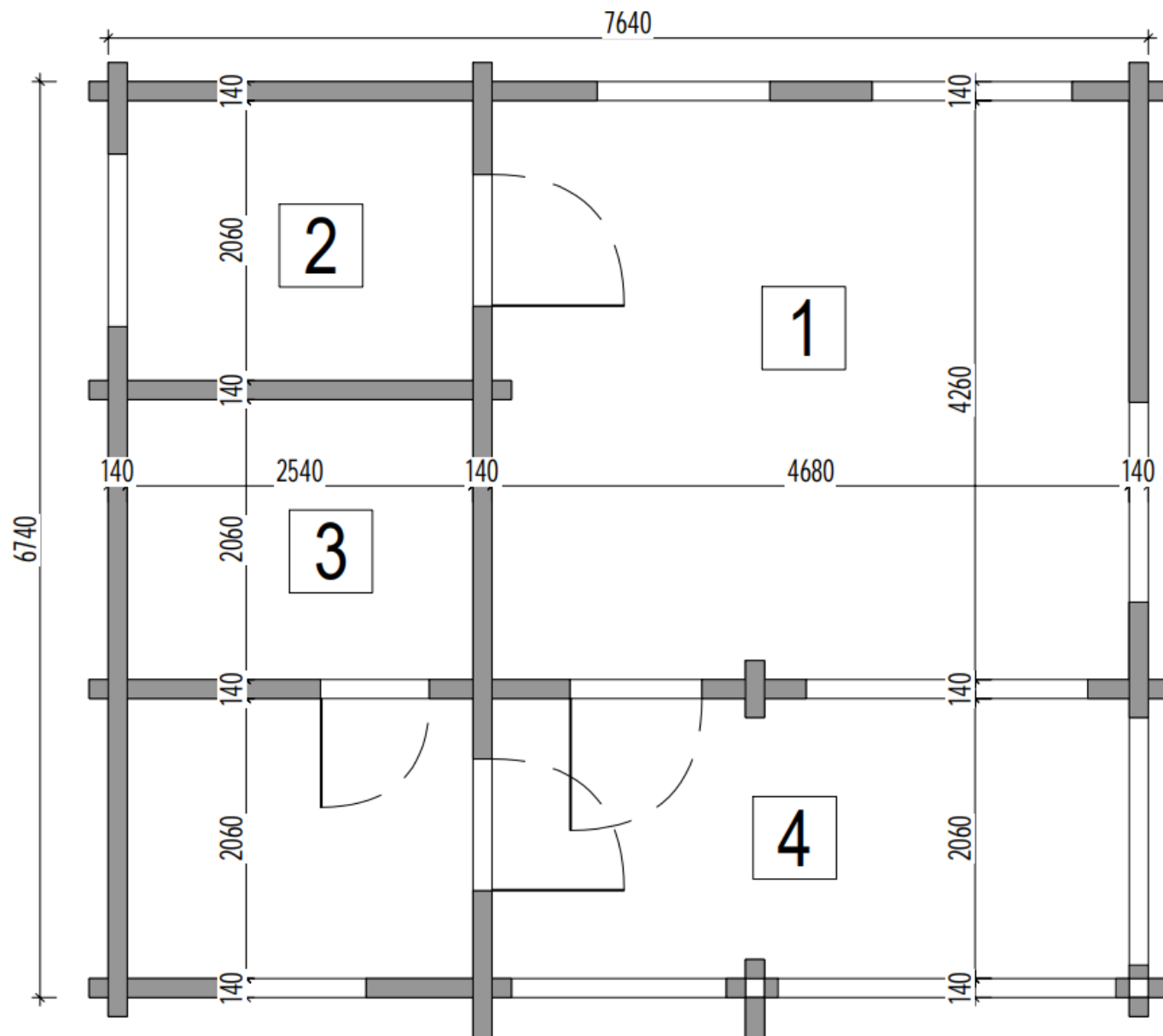
The kit includes:wall beam (140hx160), beams floors, set hardware, additional elements (elements rafter crate, systems (rafters, overlays), insulation, screed S,

floor device (floor board, logs), terrace device (terrace board).

Glued laminated timber house #6

Total area - 45,040 m²

Price: **110.000** EURO
without VAT



Экспликация помещений

Номер помещения	Наименование	Площадь, м ²	Кат. помещен.
1	Кухня-гостиная	19,94	
2	Комната	5,23	
3	Сауна	5,23	
4	Терраса	9,65	
	Итого:	40,05	

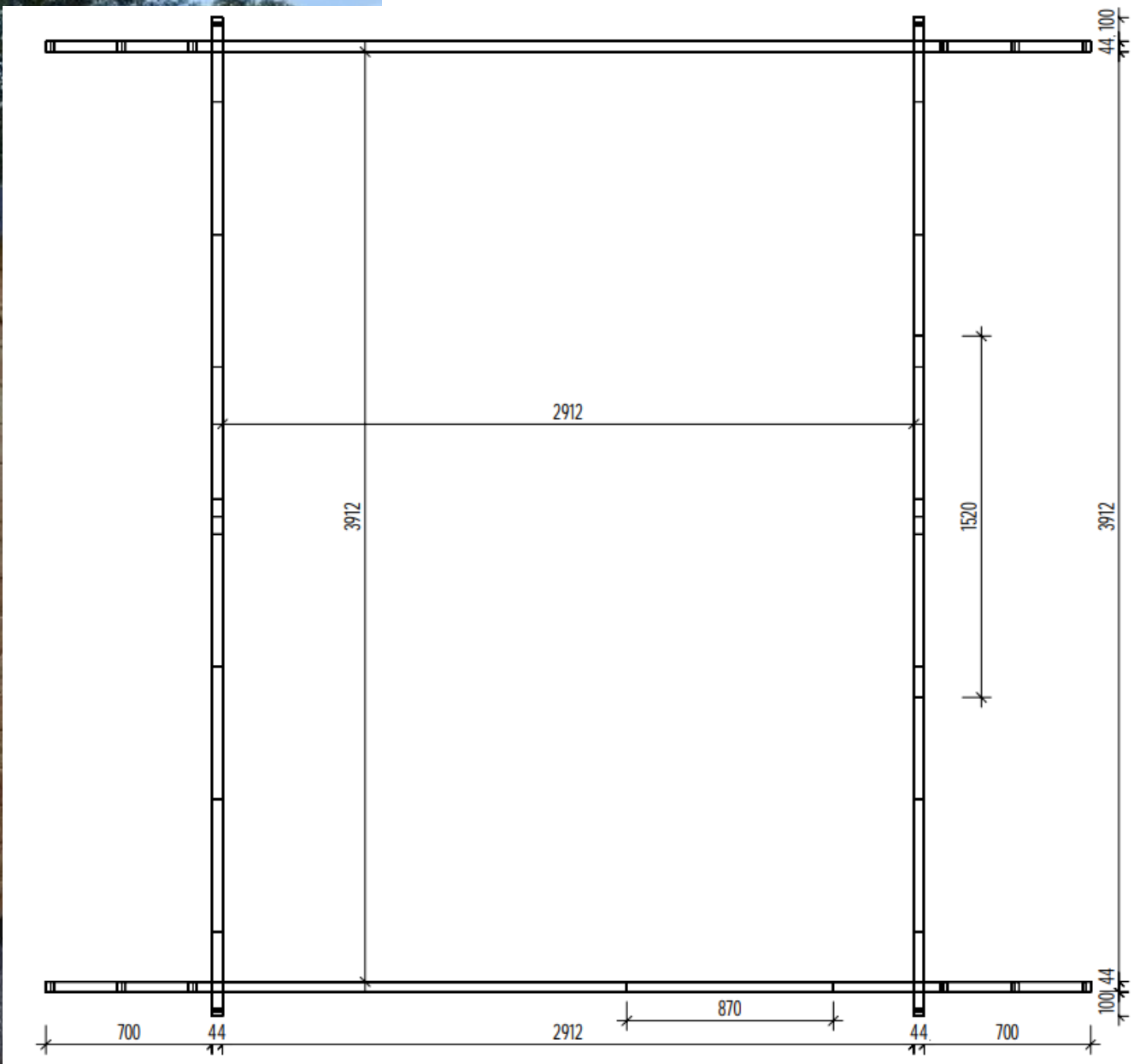


The kit includes: wall beam single layer (135hx44), set hardware, additional elements rafter system (rafters, crate,), device gender

(floor board, logs), window and door blocks.

Summer house #7
Total area - 10.41 m²

Price:**6.800** EURO without VAT





The kit includes:wall beam single-layer (135hx44), a set of hardware, additional elements, floor beams, racks, sheathing "lumber imitation", terrace board, rafter system (rafters, crate,), floor arrangement (floor board, logs), window and door blocks.

Summer house #8

Total area - 49.50 m²

Price: 37.000 EURO without VAT



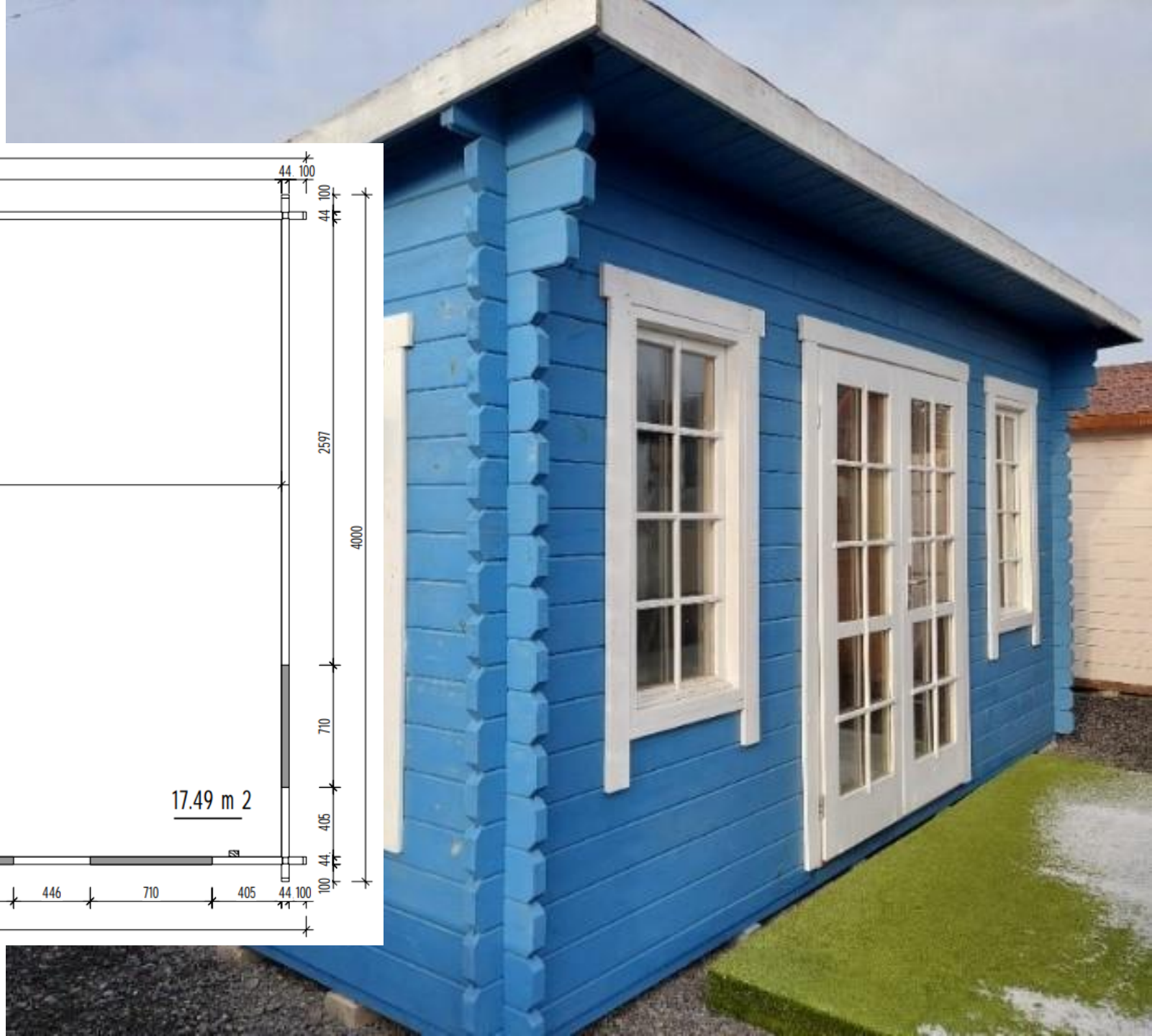
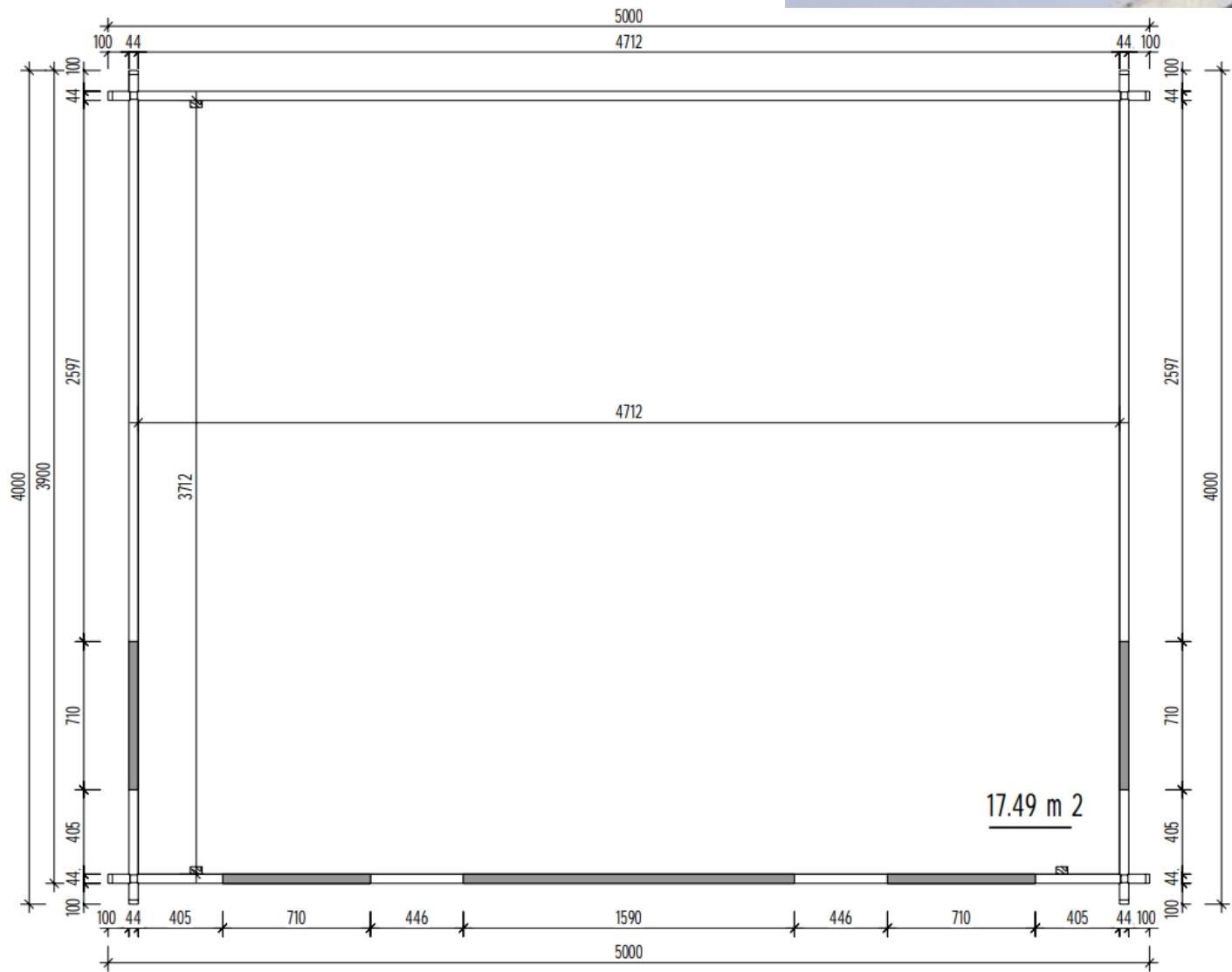


The kit includes:wall beam single layer (135hx44), set hardware, additional elements, rafter system (rafters, crate,), device gender

(floor board, logs), window and door blocks.

Summer house #9
Total area - 17.49 m2

Price:**22.100** EURO without VAT





Summer house #10

Total area - 34.67 m²

The kit includes:wall beam single layer (135hx44), set hardware, additional elements, rafter system (rafters, crate,), device gender

(floor board, logs), window and door blocks.

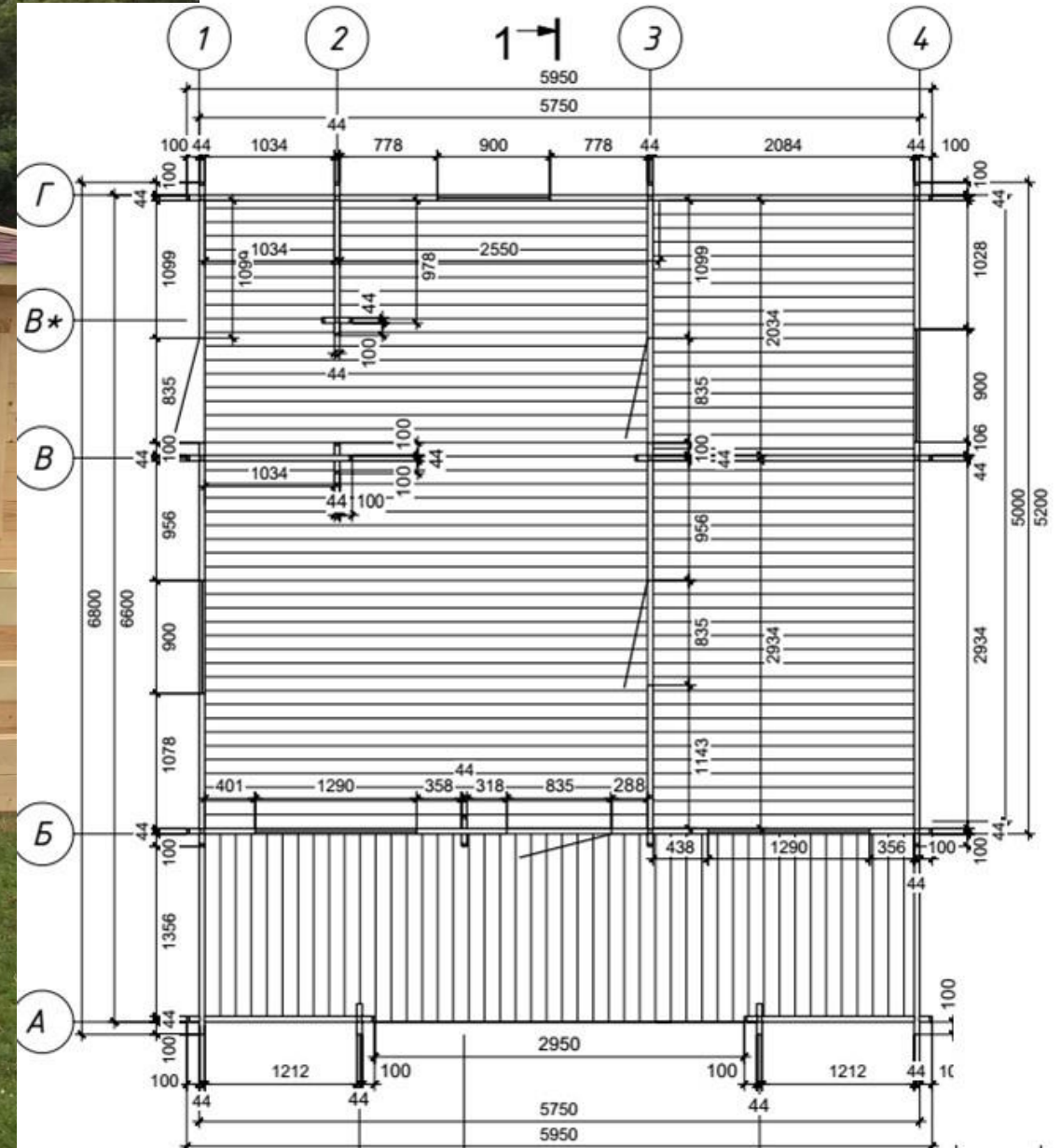
Price:14.800 EURO without VAT



The kit includes:wall beam single-layer (135hx44), a set of hardware, additional elements, floor beams, racks, sheathing "lumber imitation", terrace board, rafter system (rafters, crate,), floor arrangement (floor board, logs), window and door blocks.

Summer house #11
Total area - 49.50 m2

Price:12.400 EURO without VAT





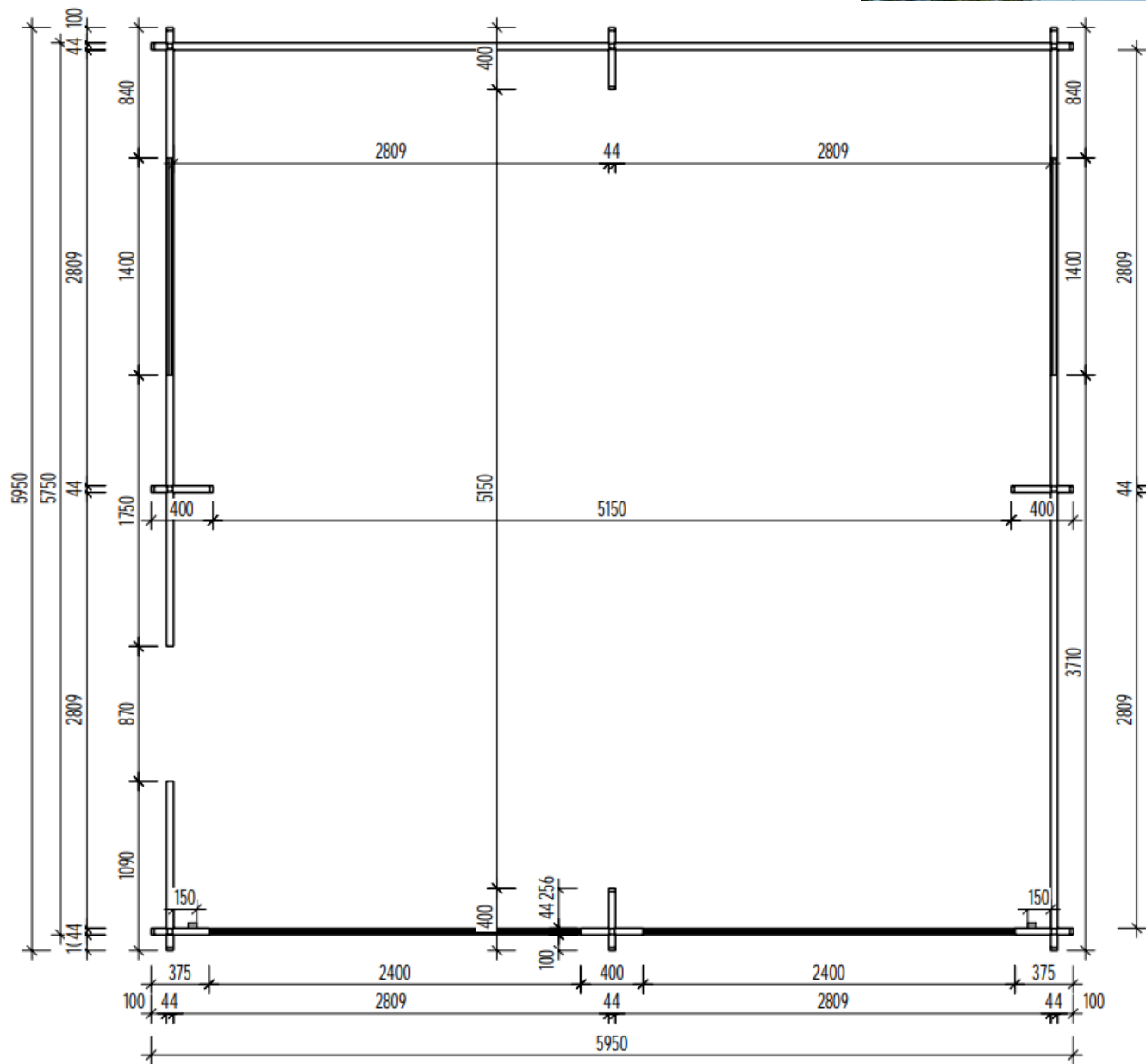
The kit includes:wall beam single layer (135hx44), set hardware, additional elements, elements rafter systems

(rafters, lathing,), flooring (floor board, logs), window and door blocks.

Single Garage

Total area - 36.00 m2

Price:**13.200** EURO without VAT



OMNA UAB

Enterprise code: 303341935

VAT code: LT100009002210

EORI code: LT303341935

Address: Vytenio Str., 9 Vilnius, LT-03113, Lithuania;

M: +370 6 965 5657

E: info@omna.lt;

<https://omna.lt>